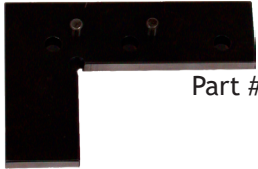




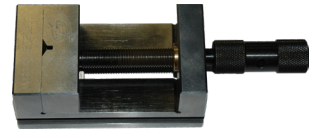
Part #ACC-BF



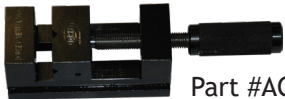
Part #ACC-LBF

## FIXTURE BANKING PLATES

- Part #ACC-BF 6" x 1" (150x25mm)
- Part #ACC-LBF 3" x 2.5" (75x63mm)
- Precision ground steel
- Reversible for left or right bank
- Can be used on horizontal stages



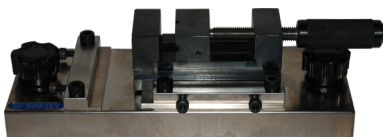
Part #ACC-V2  
(Only vertical V)



Part #ACC-V1

## PRECISION FIXTURE VISE

- Part #ACC-V1 jaw opening of 1.25" (32mm)
- Part #ACC-V2 jaw opening of 2.12" (54mm)
- Precision ground steel
- Vertical and horizontal V



## PRECISION VISE STAND

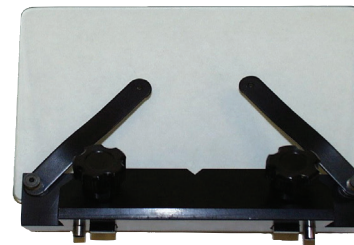
- Fixture to hold vise in 2 axes
- Part #ACC-PVS (ACC-V1 sold separately)



Part #ACC-VB1

## PRECISION V BLOCK

- Part #ACC-VB1
- Precision V block
- Hardened and ground steel
- 90 degree V 2.7" (70mm) high



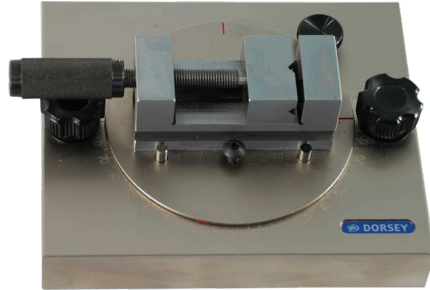
Part #ACC-VF7X5

## VERTICAL GLASS FIXTURE

- Part #ACC-VF7x5
- Used to mount flat parts on horizontal comparators
- 7" x 5" (178x127mm) glass
- 2 Chart clips & V



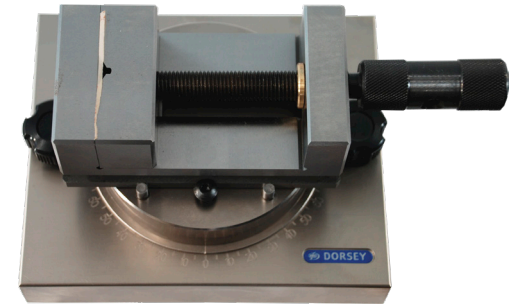
Dorsey Products - proudly made in the USA



Part #ACC-RV1

## ROTARY VISE STAGE

- Part #ACC-RV1 jaw opening of 1.25" (32mm)
- Part #ACC-RV2 jaw opening of 2.12" (54mm)
- Precision ground steel
- Positions vise in X or Y axis
- 360 degree rotation with 1 degree graduation



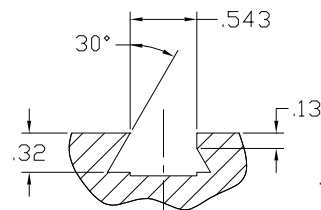
Part #ACC-RV2



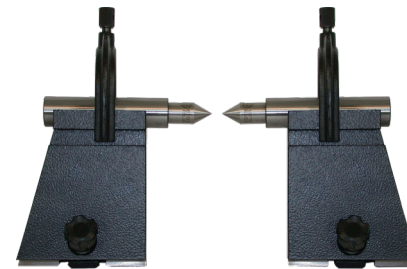
## MACHINABLE FIXTURE BLOCKS

- Used to make custom fixtures
- Precision machined steel
- Available:
  - 2" (50mm) Part #ACC-FB2
  - 4" (100mm) Part #ACC-FB4
  - 6" (150mm) Part #ACC-FB6
  - 8" (200mm) Part #ACC-FB8

Blocks lock into standard .5" dovetail

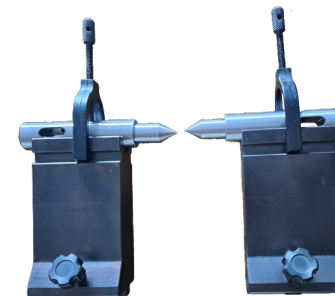


Typical universal dove tail detail used on all horizontal staging



## HEAVY DUTY V BLOCK & CENTER KIT

- Part #ACC-VBCHD
- Matched ground cast iron
- 90 degree V
- 5" (127mm) tall
- 1" (25mm) diameter centers with interchangeable Morse taper insert and clamps



Part #ACC-VBC2.5

## PRECISION V BLOCK & CENTER KIT

- Part #ACC-VBC2.5
- Matched ground hardened steel
- 90 degree V
- 2.7" (70mm) tall
- 1" (25mm) diameter centers with interchangeable Morse taper insert and clamps

For special fixtures contact Dorsey Metrology or your local Dorsey representative.

# ULTRA PRECISION COORDINATE STAGING

These precision coordinate stages can be used for optical comparators, vision systems, or microscopes. Each stage features high precision bearings.

## FEATURES:

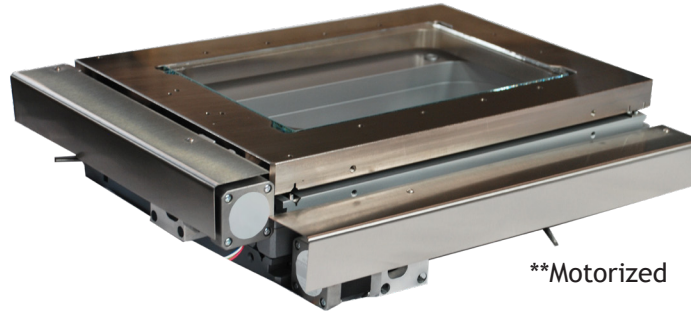
- Solid or glass plate stages available
- High precision linear bearings
- Fixturing holes with universal spacing
- Quick release on both axes on all manual stages
- Static axis bias on stage drives increases accuracy
- Universal mounting options fit many existing systems
- Scale resolution of 0.1 (one tenth) micron is standard
- Motorized versions available with stepper motors
- Motorized versions available with limit switches
- Accuracy formula  $\pm .004 + [(L/20).001]mm$
- NIST traceable calibration certificate
- 2 Year Warranty



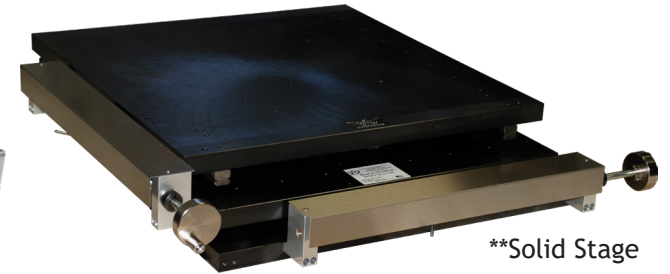
\*\*Manual Stage



\*\*Static Fixture Plate



\*\*Motorized



\*\*Solid Stage

\*\*Pictures display custom precision stages made for customers

## CONFIGURING A STAGE PART NUMBER

- Select stage travel
- After stage travel, add MN for manual or MO for motorized (Special cables, controls, and joysticks priced separately).
- After MN or MO add -01 for scales
- Example: 8X4MN-01 = 8" X 4" manual stage with scales

TECHNICAL SPECIFICATIONS				STAGE TRAVEL	
STAGE TRAVEL (X/Y)	WEIGHT CAPACITY	FRAME SIZE	GLASS PLATE SIZE	MANUAL	MOTORIZED
Static fixture plate = SFP	75 lbs*	11" x 7.4"	7" x 4.5"	Static	Static
6" x 4"	75 lbs*	15" x 10.5"	11" x 7"	Available	Available
8" x 4"	75 lbs*	15" x 10.5"	11" x 7"	Available	Available
8" x 6"	75 lbs*	15" x 15"	10.5" x 10.5"	Available	Available
8" x 8"	75 lbs*	15" x 15"	10.5" x 10.5"	Available	Available
12" x 4"	75 lbs*	16.5" x 7.4"	13.5" x 4.5"	Available	Available
12" x 6"	75 lbs*	16.5" x 7.4"	13.5" x 4.5"	Available	Available
12" x 12"	75 lbs*	21" x 21"	14.9" x 14.9"	Available	Available
13" x 13"	75 lbs*	20" x 20"	Solid stage only	Available	Available
16" x 6"	75 lbs*	23" x 15"	18.5" x 10.5"	Available	Available
16" x 8"	75 lbs*	23" x 15"	18.5" x 10.5"	Available	Available

\* only 15 lbs on center of glass