



HEAVY DUTY LOCKING METAL STAND

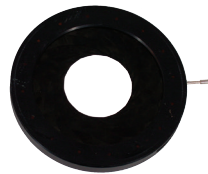
- 28.5" x 22.3" x 27"
 - Laminate top
 - 2 Heavy duty locking drawers 5" & 11" deep
 - Up to 1000 lbs. capacity
 - Made exclusively for Dorsey Metrology 16H
- Part #ACC-CAB27



STAND WITH SHELF

- 24" x 36" x 32"
- Solid steel construction
- Up to 750 lbs capacity
- Durable finish

Part #ACC-CAB32



Part #ACC-16ID

IRIS DIAPHRAGM

- Part #ACC-16ID for 16" benchtops
- Mounts over condenser
- Used to improve collimation and reduce glare
- Improved measurement accuracy for cylindrical parts



Part #ACC-16GF

GREEN FILTER

- Part #ACC-16GF for 16" benchtops
- Mounts over condenser
- Monochromatic filter increases contrast and reduces optical aberrations while reducing operator eye fatigue



Part #ACC-16PF

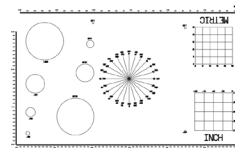
POLARIZING FILTER

- Part #ACC-16PF for 16" benchtops
- Mounts over condenser
- Used to reduce glare on ground parts
- Improves contrast on translucent plastic



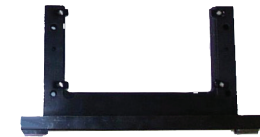
GLASS READING MASTER

- Part #ACC-MAGMM
- 3" X 16" Overall size
- 14" scale
- Fitted storage box
- NIST Traceable accuracy certification
- For magnification calibration (measuring the projected image)



CALIBRATION PROJECTION MASTER

- Part #ACC-MAGPM-1
- Overall accuracy +/-0.003mm
- Line-to-line accuracy +/-0.001mm
- Inch/metric graduations
- Fitted storage box
- NIST Traceable accuracy certification
- For linear calibration and projection of magnification image



PROJECTION MASTER STAND

- Part #ACC-MAGPMF
- Designed to accurately hold and protect ACC-MAGPM during use on horizontal optical comparators
- Precision ground base
- Wooden storage box